

INFILED
Screen your dreams

exertis



WK
SERIES

ULTRA-LIGHT ENERGY-EFFICIENT SOLUTIONS



WK series, a digital LED display designed by INFiLED for indoor fixed installation, is characterized by ultra-light, energy-saving, high resolution. With a 16:9 panel ratio and a high refresh rate of 3840Hz.

The WK series is equipped with a superior heat dissipation system on its back, to support the long-term efficient operation of the screen; besides, it has a neat internal circuitry design that makes it easier for workers to connect each LED module.

This series is ideal to install in a variety of scenarios including command centers, conference rooms, and subway stations.

A great energy-efficient display solution, well-designed ultra-light screens.

Indoor applications



Thin and Light



High Contrast



Fast Installation



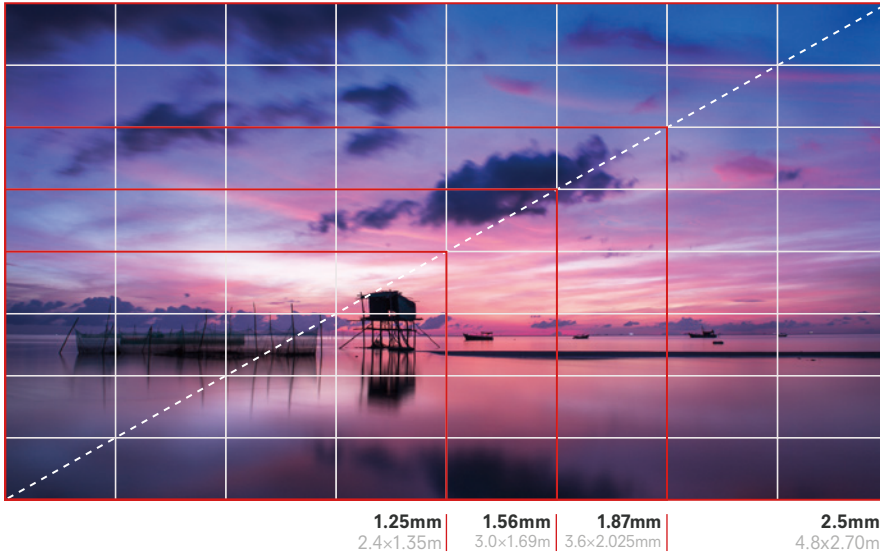
Front Maintenance

Pixel Pitch	1.25, 1.56, 1.87, 2.5mm
Brightness	600-1200nits
Cabinet Size	600×337.5×29.5mm



KEY FEATURES

High definition



A panel ratio of 16:9 combined with fine pixel pitch allows the setup of Full HD resolution displays to be achievable.

Ultra-light

The weight of each WK cabinet is less than 5 kg.

Energy-efficient

Maximum power consumption $\leq 150\text{W}/\text{panel}$

Average power consumption $\leq 50\text{W}/\text{panel}$

Reliable configuration

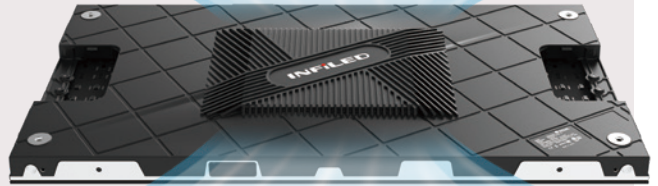
The backup power and dual signal loop guarantee the LED screen performs stably.



KEY FEATURES

Excellent cooling

Rapid cooling in the central control, with improved cooling efficiency and a longer lifespan of the display



Install solution

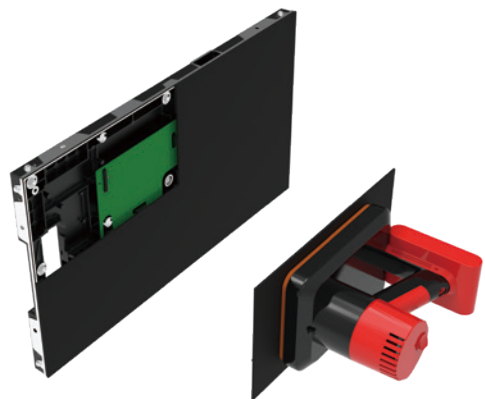


Features an edge thickness of 29.5mm, and the combined thickness is only 37mm when mounted with the slimline floating bracket.

Easy maintenance

Modules can be installed directly into the frame without wiring.

The innovative vacuum suction tool for easy front maintenance.



SPECIFICATIONS

Model Number

Pixel Pitch
Physical Density
LED Arrangement
Module Dimensions
Module Resolution
Cabinet Dimensions
Cabinet Resolution
Cabinet Weight
Brightness
Max Power Consumption
Avg Power Consumption
Viewing Angle
Operating Power Source
Operating Temperature
Refresh Rate
IP Rating
Signal Input Source
Verification

IL-FISS-IRWK1.25

1.25mm
640,000pixels/m ²
3 IN 1 SMD
300x168.75mm (11.8x6.64in)
240x135pixels
600*337.5*29.5mm (23.62x13.29x1.16in)
480x270pixels
4.9kg(10.8lb)
600nits
150w/ Panel
50w/ Panel
160°/160°
100-240V AC, 50/60Hz
-10°C~+45°C
3,840Hz
IP30
DVI,HDMI, DP, SDI
CE, RoHS,FCC,ETL,REACH

IIL-FISS-IRWK1.56

1.56mm
409,600pixels/m ²
3 IN 1 SMD
300x168.75mm (11.8x6.64in)
192x108pixels
600*337.5*29.5mm (23.62x13.29x1.16in)
384x216pixels
4.9kg(10.8lb)
700nits
100w/ Panel
33w/ Panel
160°/160°
100-240V AC, 50/60Hz
-10°C~+45°C
3,840Hz
IP30
DVI,HDMI, DP, SDI
CE, RoHS,FCC,ETL,REACH

Model Number

Pixel Pitch
Physical Density
LED Arrangement
Module Dimensions
Module Resolution
Cabinet Dimensions
Cabinet Resolution
Cabinet Weight
Brightness
Max Power Consumption
Avg Power Consumption
Viewing Angle
Operating Power Source
Operating Temperature
Refresh Rate
IP Rating
Signal Input Source
Verification

IL-FISS-IRWK1.87

1.87mm
284,444pixels/m ²
3 IN 1 SMD
300x168.75mm (11.8x6.64in)
160x90pixels
600*337.5*29.5mm (23.62x13.29x1.16in)
320x180pixels
4.9kg(10.9lb)
800nits
140w/ Panel
46w/ Panel
160°/160°
100-240V AC, 50/60Hz
-10°C~+45°C
3,840Hz
IP30
DVI,HDMI, DP, SDI
CE, RoHS,FCC,ETL,REACH

IL-FISS-IRWK2.5

2.5mm
160,000pixels/m ²
3 IN 1 SMD
300x337.5mm(11.81x13.29in)
120x135pixels
600*337.5*29.5mm (23.62x13.29x1.16in)
240x135pixels
4.9kg(10.8lb)
800nits
140w/ Panel
46w/ Panel
160°/160°
100-240V AC, 50/60Hz
-10°C~+45°C
3,840Hz
IP30
DVI,HDMI, DP, SDI
CE, RoHS,FCC,ETL,REACH

The product specifications can be customized



Shenzhen HQ | Barcelona | Dubai | Rotterdam | Los Angeles | Kuala Lumpur

For more information, contact:
info.emea@infiled.com



www.infiled.com

KEY FEATURES

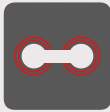
Full HD Set



Our WK series Full HD sets are available in a range of options:

WK 1.25 / WK 1.56/ WK 1.87/ WK 2.5

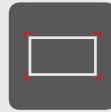
Each set comes with a comprehensive package that includes:



Vacuum Suction Tool
for convenient front access maintenance



Wall Mounting
brackets system



Outer Frame
surrounding the screen



Novastar
MCTRL 600 controller



5% Spare
components

Single package

All components are thoughtfully packaged onto a single pallet/box and are appropriately labeled.

This packaging design ensures easy handling and efficient warehousing for both incoming and outgoing shipments.

